

City of Paris

A Guide to City Services

PARIS



MAIRIE DE PARIS





Being attentive to the needs of Parisians and creating a vibrant, inventive city that is more inclusive and welcoming are some of the key missions and values that drive the municipality.

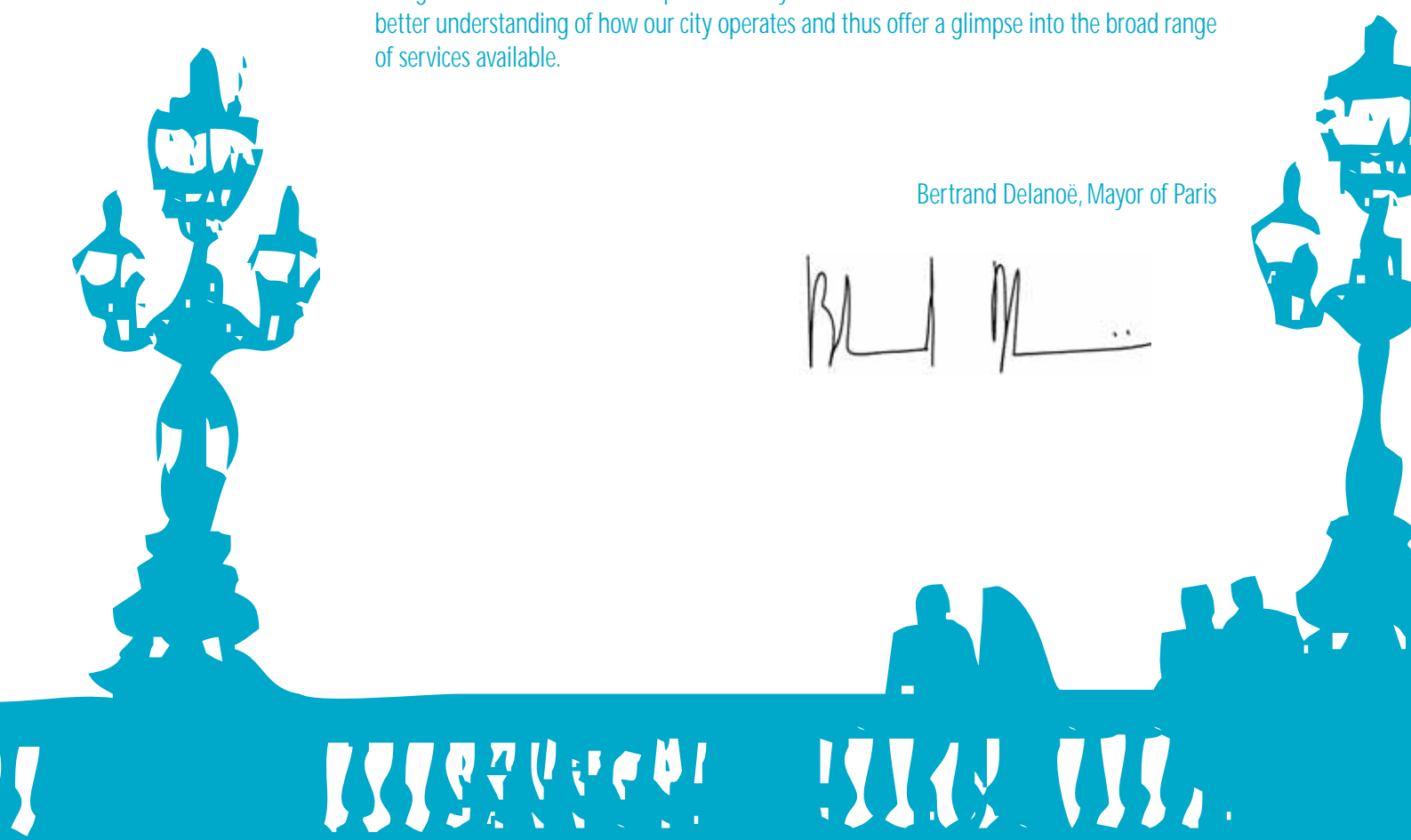
Every day, the City of Paris provides services in a large number of spheres, including social services, housing, health care, transport, economic development, the environment, schools and urban planning. The city relies on the energy and expertise of its 46,000 employees.

The quality of services provided to residents is key to our efforts and to Paris' image and identity, owing to the relationships we forge not only with each citizen but also with other cities in France and abroad.

The goal of this brochure is to provide everyone - resident and non-resident alike - with a better understanding of how our city operates and thus offer a glimpse into the broad range of services available.

Bertrand Delanoë, Mayor of Paris

A handwritten signature in black ink, appearing to read 'Bertrand Delanoë'.



Please visit www.paris.fr
for a more in-depth look at the City of Paris,
its operations and its current activities...

Paris: municipality and department

Paris has always held a unique position in the French administrative structure. Today, the special status of the City of Paris forms the basis for its organization.

Paris: municipality and department

The law of 31 December 1975 created two authorities in the Paris administrative region: the **City of Paris** and the **Department of Paris**. Like all municipalities, Paris is administered by a mayor and a council, but the Paris council is both a city council and a conseil général [departmental or county council]. The city's major responsibilities include urban planning, primary schools, social services, health care, housing, culture, the environment and transport, while the department manages social and health-care policy, secondary schools and economic development.

Paris City Council

The council of 163 Paris city councillors, who are elected for six-year terms, adopts a budget every year that reflects the choices and objectives of the municipality, the mayor and his/her cabinet.

Mayor of Paris

Elected on 25 March 2001 for a six-year term, Bertrand Delanoë is the third elected mayor of Paris. The City of Paris was administered by a prefect until 1977.

MAYOR'S CABINET

the 33 cabinet members are responsible for the following services:

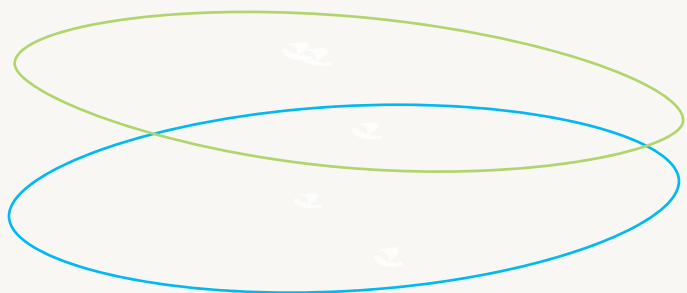
Gender equality time management bureau	Integration and non-EU foreign residents	Memorials, veterans affairs, archives	School life, organization of school calendars	Disabled persons	
Student life	Tourism	Commerce, trades	Government controlled companies and public works contracts	Health care, relations with AP-HP	Higher education
New technologies and research	Urban planning and architecture	Water and sanitation	Culture	Housing	International relations and relationships with the French-speaking world
Youth services	Ombudsman service	Environment, property and green spaces	Local democratic institutions, civic associations	Relations with Ile-de-France regional authorities	Solidarity and social affairs
Transport, traffic, roads and parking	Prevention, safety Organization of Paris City Council	General administration, human relations, decentralization	Senior citizens	Cultural heritage	Fight against social exclusion
		Sport	City policies	Economic development, finance and employment	Early childhood and family

City Hall



Paris: a city in touch with its residents

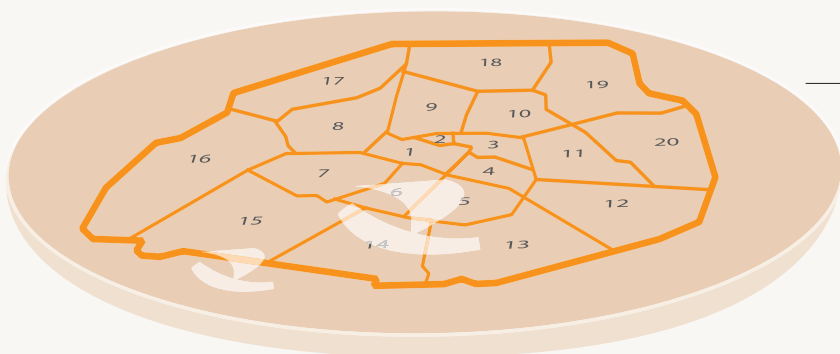
Paris is made up of 20 arrondissements [districts], each administered by a mayor and council.



1 mayor + 33 cabinet members
the Paris executive branch determines overall policy.

163 Paris city councillors
manage municipal and departmental affairs and adopt budgets.

20 mayors
in each arrondissement
and 20 arrondissement councils.



Arrondissements

arr.	Inhabitants	Elected Officials
1	16 888	13
2	19 585	13
3	34 248	13
4	30 675	13
5	58 849	14
6	44 919	13
7	56 985	15
8	39 314	13
9	55 838	14
10	89 612	18
11	149 102	33
12	136 591	30
13	171 533	39
14	132 844	30
15	225 362	51
16	161 773	39
17	160 860	39
18	184 586	42
19	172 730	36
20	182 952	39

Chiffres population INSEE, recensement 1999

Arrondissement mayor

Elected for a six-year term, he/she is a civilian official with the power to submit opinions on any plans being considered by the arrondissement council.

Arrondissement council

This council has the power to consult on all decisions and plans made by the Paris City Council concerning the arrondissement in question. It acts as the liaison between the population and Paris City Council and manages such local facilities and services as sport, education and parks...

121 neighbourhood councils

These serve as information and discussion forums and contact points for neighbourhood residents, the mayor and elected representatives.

Citizen participation

Local democratic institutions

These consist of 121 neighbourhood councils spread out among the 20 arrondissements, each of which has a youth council and a consultative and planning committee (CICA) plus a citizenship council for non-EU Paris residents, a student life council and a Paris youth council.

Civic associations...

Associations are at the heart of social, cultural and civic life. Some **150,000 Parisian associations** play an essential role in harmonizing programmes and assessing needs. They come together in a consultative and planning committee (CICA) in each arrondissement. These associations meet in a facility within the arrondissement, provided by the city.



The city and its institutional partners

Because of its special status, the City of Paris is part of an institutional network served by other government bodies located within its territory, such as the Police Authority and Paris Hospital Administration & Hospitals of Paris. Other institutions include local government agencies, such as the City of Paris Centre d'Action Sociale (Social Action Centre) and Caisses des Écoles (school found), plus inter-city and inter-departmental cooperative bodies that the city helped create and of which it is a member: SYCTOM, which oversees household waste processing, and SIAAP, which manages sanitation for the Paris metropolitan area. The City of Paris also invests in many government-controlled companies.

Shared powers

Mayor of Paris

The mayor carries out his or her assigned responsibilities as both mayor and chairperson of the conseil general; chairs the Paris City Council; prepares the city's budget; regulates roads (other than major highways); appoints and manages city employees; and enforces City Council decisions.

Ile-de-France Regional Council

This council manages the construction and maintenance of secondary schools, supervises apprenticeship programs and adult vocational training, and contributes to economic development.

Ile-de-France regional prefect and Paris prefect

The prefect acts as the State's representative in the department, manages housing policy, enforces the law, organizes elections, and ensures that City of Paris decisions comply with the law and budgetary controls.

Police Prefect

This prefect provides administrative documents, inspects food products, conducts safety inspections of buildings, controls traffic on major highways, and provides rescue and fire prevention services.

Government-controlled companies (GCC)

The City of Paris is a shareholder in a number of government-controlled companies whose objective is to operate profitably and serve the interests of Parisians. Such companies carry out public-works projects for the property, utilities, and planning and development sectors.

GCC UTILITIES	CPCU	Paris urban heating system
	SEMMARIS	Rungis national market development and management company, Paris metropolitan area
	SOGARIS	Rungis bus station management company
	CENECA	National centre for agricultural fairs and competitions
	SNTE	Eiffel Tower management company
	POPB	Paris-Bercy sports complex
	SAGEP	water management corporation
	SAEMES	parking management company
	SAEMPF	Paris funeral homes
GCC PROPERTY	SGIM	city real estate management company
	SAGI	property management corporation
	RIVP	City of Paris real estate management corporation
	SGJA	Jeanne d'Arc property management company
	SEMIDEP	interdepartmental company, Paris metropolitan area
	SEM Paris centre	
GCC PLANNING & DEVELOPMENT	SEMAPA	Paris urban planning and development
	SEMAVIP	City of Paris urban planning and development
	SEMEA 15	15th arrondissement urban planning, development and facilities
	SEMAEST	eastern Paris urban planning and development

Paris city government

The city government of Paris implements the objectives set by the mayor and his/her cabinet. It has 46,000 employees in more than 20 departments.

Organizational chart of departments

General inspection

General secretariat
of the City of Paris
Associated departments
and commissions

General secretariat
of the Paris City Council

DEPARTMENTS

Information and communications	Finance	Human Resources	General services	Information systems and technologies
Legal affairs	Urban planning	Decentralization and relations with civic associations, regions and residents	Housing	Property and architecture
Roads and transport	Environmental protection	Parks, gardens and green spaces	Prevention and protection	Job and economic development
Social services, children and health care	Families and early childhood	Youth services and sport	Cultural affairs	Education
City of Paris Social Action Centre	Commission on City Policy Planning and Integration	International Relations	Special Events and Protocol	Modernization

Special offices

Four special offices report directly to the general secretariat:

Time management Bureau, Centre for Gender Equality Monitoring, Cinema Office, Tramway Bureau.

Relations between city government and the public Ombudsman/woman

Anyone who uses city hall services – whether residents or non-residents of Paris, individuals, associations, tradespeople, merchants or companies – can directly contact the ombudsman/woman if they fail to receive a satisfactory response from the department in question or when their correspondence remains unanswered. This free service is permits an out-of-court settlement of conflicts.

For more information, call 3975 or go to www.paris.fr

Providing the means to succeed

budget

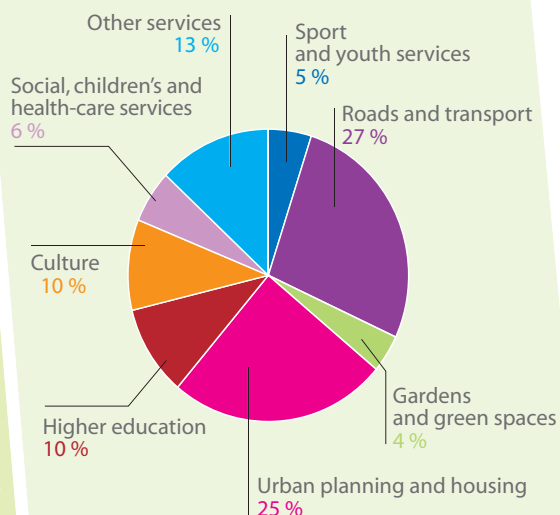
Breakdown of the budget

€ 6,4 billion
Paris' total budget

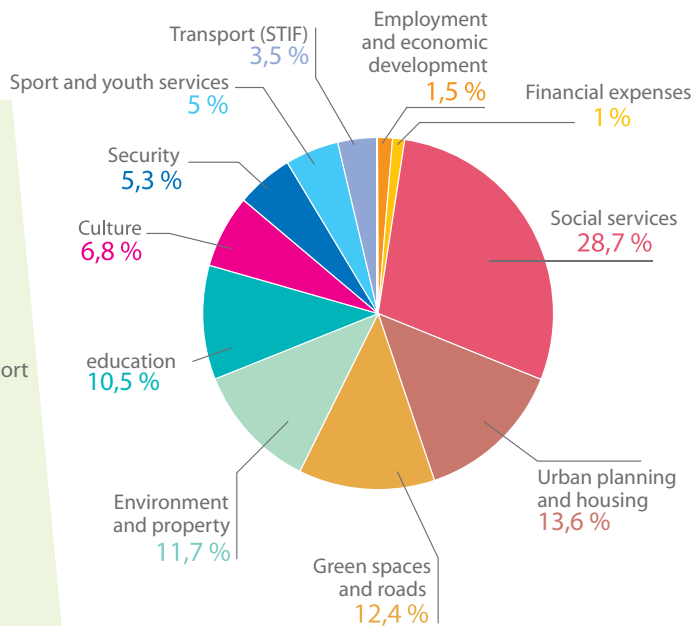
including € 1,4 billion
in investments

2005

Investments



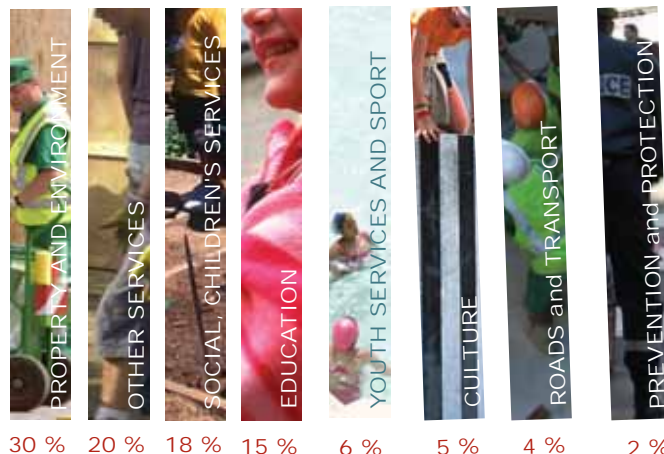
Operating expenses



Men and women serving the people of Paris



46,000 employees
spread among various departments



Working toward a more inclusive, liveable city

The City of Paris focuses on the following priorities: providing ongoing services, being attentive to the needs of Parisians, and building an equitable, inclusive, appealing, forward-looking city.

HOUSING AND URBAN PLANNING



Carrying out an innovative housing policy • Funding low-income housing • Eliminating housing that is unfit for habitation • Improving the quality of existing housing • Facilitating home ownership • Building Paris' future by carrying out urban development projects and creating a local urban development plan.

Creating a local urban development plan • Developing new neighbourhoods within the framework of the master plan for urban redevelopment • Redeveloping the Les Halles neighbourhood • Developing a mixed-development zone on Paris' Left Bank...

More than **4,000** low-income housing units funded every year • **22** development zones • **8,558** annual requests for urban development authorization...

TRANSPORT



Reducing auto pollution • Diversifying transport methods • Building a road system that minimizes traffic and fosters public transport, including tramways, bus lanes and bike paths • Redeveloping residential parking • Increasing transport security • Creating parking zones for deliveries and motorcycles.

Soundproofing the Paris ring road • Developing a master transport plan for Paris • Constructing the Bercy Tolbiac footbridge • New public transport project: tramways • Developing bus and car lanes to better use public space...

25,000 parking spaces created for motorcycles • **5,971** public and private roads (outside of wooded areas), totalling some 1,700 km • A **35.04-km** ring road • Bicycles account for 11% of road travel.

ENVIRONMENT



Creating a clean, environmentally friendly city • Increasing selective waste collection • Providing water of impeccable quality • Creating more green spaces in the city centre • Implementing an environmental & sustainable development policy • Preventing and combating rude behaviour • Monitoring and protecting municipal property.

Creating gardens at La Cour du Maroc, Batignolles and Grands Moulins • Developing waste-reduction and noise-abatement plans and Agenda 21.

Two wooded areas, 400 gardens • 5,434 acres of green space open to the public • 3,000 tons of waste collected every day • 1,221,696 tons of waste collected annually, including 51,007 tons of recyclables and 48,089 tons of glass...

ECONOMY AND EMPLOY



Boosting economic growth • Supporting business start-ups and small-scale industries • Protecting local commerce and outdoor markets • Providing a warmer welcome to tourists and improve tourist information • Expanding cooperation with neighbouring communities • Promoting Paris' image abroad • Creating links with capitals and large cities in other countries • Developing programmes to promote good citizenship and solidarity • Creating a capital city that symbolizes respect for human rights.

Launching the Paris Biopark project • Developing business incubators • Job placement programme for those receiving public assistance • Supporting innovative companies...

Paris' employment picture in 2004: 5,000 new jobs • 53,000 retail establishments • 26 million visitors • 49.6 million jobs in Ile-de-France, including 1.675 million in Paris • 15 million sq.m of office space • 68 outdoor markets...

SOLIDARITY AND CITIZENSHIP



Creating more day-care and preschool spaces for young children • Offering a variety of child-care options • Providing job re-entry programmes for unemployed and marginalized Parisians • Making life easier for those with disabilities • Improving living conditions for senior citizens • Developing health-related prevention and information programmes (tuberculosis, drug addiction, AIDS) • Fighting all forms of discrimination, including violence against women • Improving the quality of life in dilapidated neighbourhoods • Encouraging social integration and employment by facilitating access to social benefits.

Developing master plans for senior and disability services • Expanding day-care and preschool programmes...

26,472 day-care and preschool spaces (city-run and non-profit) • Objective: creating **4,500 additional** spaces (2,366 created between 2001 and 2005) • **20,350** elderly beneficiaries of services offered by APA (agency on aging).

CULTURAL HERITAGE AND ASSETS



Expanding and improving public access to all cultural assets • Supporting the arts • Preserving and upgrading city property • Encouraging artistic expression • Preserving the collective memory • Transforming 104 Rue d'Aubervilliers into an international venue for artistic expression • Renovating the Gaité Lyrique theatre and the Petit Palais...

Nuit Blanche: an all-night cultural festival attracting 1.5 million visitors • 134 museums, 143 theatres, and 1,203 film shoots per year.

EDUCATION AND YOUTH SERVICES



Supporting academic success • Managing student admissions and orientation • Improving the quality of school life • Offering quality educational and leisure activities • Helping young people become more independent • Supporting student life • Operating the city's secondary schools • Promoting Paris' intellectual heritage and supporting research.

Renovating school buildings • Constructing new classrooms and school facilities...

134,000 students registered in the public schools, with 100,000 eating lunch at school • **22,000 participants** in Wednesday recreational and day-care programmes • 31 classes for mainstreaming disabled children...

SPORT



Improving and promoting access to sporting activities for enthusiasts and top athletes alike • Building new facilities • Renovating existing facilities • Adjusting opening hours as needed • Participating in major events.

Constructing and opening new facilities, including the Pailleron swimming pool/skating rink, a swimming pool on the Seine and the Belleville sport complex • Hosting major national and international sporting competitions...

380 sport facilities, including 37 stadiums, 35 swimming pools and 142 tennis courts.

Paris: a city open to the world

Paris shares its experience in various arenas, and the city's know-how is enriched by the best practices of other world-class cities in return. The city's two guiding principles are "cooperation" and "solidarity".

Paris: a player on the stage of international cooperation

Friendship and cooperation pacts

- The City of Paris' international efforts focus on urban development, the environment and culture. Through friendship and cooperation pacts, the city has ties with some 40 major cities that often face the same types of problem.

City networks

- Speaking on behalf of local authorities, the global organization United Cities and Local Governments (UCLG) - created in Paris in 2004 and co-chaired by Paris Mayor Bertrand Delanoë - supports local efforts, for instance the implementation of the Millennium Development Goals set by the United Nations to reduce world poverty.
- Development projects in the Southern hemisphere are funded by the International Association of French-Speaking Mayors (AIMF), which represents 137 cities and 46 countries and is chaired by the mayor of Paris.
- Paris also participates in networks of European cities (Eurocities, UCUE) in partnership with European institutions and takes part in European Commission programmes.

Paris: mobilizing for a more united world

- Promoting freedom worldwide

Paris places great store on human rights, civil liberties and freedom of the press, and is strongly committed to supporting such rights and freedoms throughout the world.

- International solidarity

Paris supports programmes in other countries run by NGOs and civic associations. The city also expresses its solidarity in emergency situations and natural disasters through suitable relief efforts (some recent examples: the December 2004 tsunami, the Bam earthquake and flooding in Haiti).

- Mobilization against AIDS

Every year, Paris devotes substantial funding to the fight against AIDS in Africa (€1.65 million in 2005).